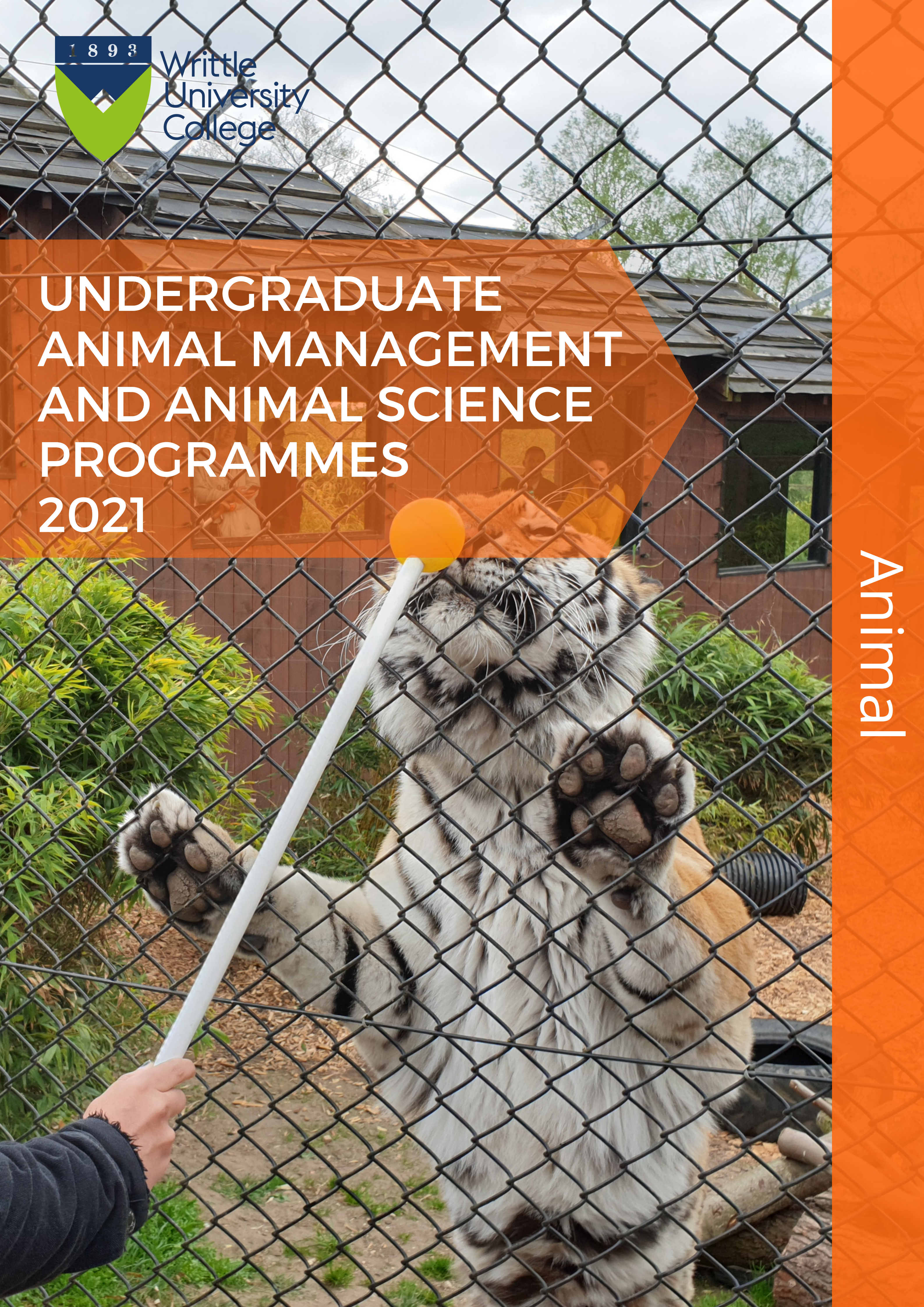




Writtle  
University  
College

# UNDERGRADUATE ANIMAL MANAGEMENT AND ANIMAL SCIENCE PROGRAMMES 2021

Animal







#### DID YOU KNOW?

WRITTLE UNIVERSITY COLLEGE IS AN EDUCATIONAL ASSOCIATE OF BIAZA, THE BRITISH AND IRISH ASSOCIATION OF ZOOS AND AQUARIUMS.

OUR PET BEHAVIOUR AND WELFARE PATHWAYS ARE ANIMAL BEHAVIOUR AND TRAINING COUNCIL (ABTC) RECOGNISED PROGRAMMES.

## DO YOU HAVE AN INTEREST IN ANIMALS?

---

We run two distinct Animal programmes at Writtle. Animal Management focuses on everything about the animal – from welfare to breeding – with a strong emphasis on animal husbandry. Animal Science includes the study of recent advances and it will enhance an understanding of science behind the animal behaviour, health, growth and development.

#### Top Reasons to study Animal Management & Science at Writtle University College:

1. Our programmes give you the opportunity to gain a named award in your chosen area of interest, be it Livestock Technology, Zoo and Wildlife Conservation or Pet Behaviour and Welfare.
2. With more than 250 species on-site, we have a huge range of animals for you to study, including reptiles, exotic mammals, horses, livestock and pets.
3. You will enjoy some behind-the-scenes visits to zoos, farms and research centres, such as The Aspinall Foundation.
4. You will be able to apply for our amazing study tour to Umphafa in South Africa, Colchester Zoo's private nature reserve or work as an intern through the zoo's own programme.
5. You will be learning from academics who have produced high-profile research - check out how we tracked cow behaviour using state-of-the-art precision tracking sensors.

#### DID YOU KNOW?

We offer Foundation Year programmes for each of our BSc (Hons). These are four year programmes with a Year 0 covering Science and Academic skills. Students will then progress on to the three year degree.





# ANIMAL SCIENCE OR ANIMAL MANAGEMENT



## Animal Science

This biological science-based degree course combines both pure and applied sciences in the study of animals. Alongside practical animal management skills are topics relating to the underlying biological principles of biochemistry, genomics and animal growth alongside core subjects of behaviour and nutrition. This course is for those wishing to have a strong scientific understanding of animal biology and how it relates to animal health and disease, animal growth and their development. Option routes outlined in course pages provide specialist teaching of pet behaviour and welfare, zoo and wildlife conservation, and farm livestock technology.



## Animal Management

This degree course takes a holistic approach to animal management and prepares students for the increasingly diverse enterprises of the UK animal industry. A wide range of species are available to enable students to gain sound practical animal husbandry skills, which are then complemented by an academic programme that covers topics such as nutrition, breeding, health and behaviour. These are combined with a deeper understanding of business and trade as it relates to the animal sector. Option routes outlined in course pages provide specialist teaching of pet behaviour and welfare, zoo and wildlife conservation, and farm livestock technology.





**BSc (Hons)**

**Animal  
Science**

**UCAS CODE:  
D321**

## **ABOUT THE COURSE**

This course offers a fresh approach to animal science, which is achieved by incorporating practical animal management skills into a broad programme of academic study. This three year Animal Science degree will enable students to develop a sound understanding of scientific principles whilst also developing practical competence with a wide range of species

## **ASSESSMENT METHODS**

This programme provides a mix of assessment methods including.

- Practical assessments with companion and zoo animals, farm livestock and horses
- Examinations
- Presentations
- Essays and technical reports
- Assessed seminars
- Case studies
- Experimental work and laboratory reports
- Poster presentations
- Debates
- Dissertation

## **ENTRY REQUIREMENTS**

- UCAS Tariff points: 96
- All applicants must hold a minimum of four GCSE passes at grade C/4 or above to include English, Maths and Science.
- Please visit our website for a full list of entry requirements.



# COURSE MODULES

BSc (Hons)

Animal  
Science

Level 4		Level 5		Level 6	
Semester 1	Semester 2	Semester 3	Semester 4	Semester 5	Semester 6
Professional Skills for the Animal Industry		Research Methods		Capstone Project	
		Business Skills			
Animal Biology		Behaviour	Nutritional Biochemistry	Applied Nutrition and Feeding	Advanced Animal Health Science
Ethics of Animal Use	Introduction to Biochemistry	Animal Health Science	Reproduction and Development	Genetics and Genomics	Applied Animal Behaviour and Welfare
		Module Option *see below	Module Option *see below	Module Option **see below	Module Option **see below
Animal Husbandry		Livestock Production Science		Precision Livestock Technology	Developments in Livestock Production
Ecology and Evolution		Management of Zoo Animal Collections		Applied Issues in Wildlife Conservation	Developments in Zoo Management
		Professional Practice and Legislation	Applied Behaviour and Training	Clinical Animal Behaviour	Clinical Behaviour Practice for Pets

- BSc (Hons) Animal Management: UCAS Code D301
- BSc (Hons) Animal Management (Livestock Technology): UCAS Code D307
- BSc (Hons) Animal Management (Zoo and Wildlife conservation) UCAS Code D305
- BSc (Hons) Animal Management (Pet Behaviour and Welfare) UCAS Code D304

\*Year 2: Business Concepts and Development, Professional Practice and Legislation, Applied Behaviour and Training

\*\*Year 3: Applied Issues in Wildlife Conservation, Developments in Zoo Management, Complementary Therapies, Consultancy Project.

For more information please visit our website





**BSc (Hons)**  
**Animal  
Management**

**UCAS CODE:  
D301**

## **ABOUT THE COURSE**

Our Animal Management courses take a holistic approach to animal management and prepare students for the increasingly diverse enterprises of the UK animal industry. A wide range of species are available to enable students to gain sound practical animal husbandry skills, which are then complemented by an academic programme that covers topics such as nutrition, breeding, health and behaviour.

## **ASSESSMENT METHODS**

This programme provides a mix of assessment methods including.

- Practical assessments
- Examinations
- Presentations
- Essays and technical reports
- Assessed seminars
- Case studies
- Experimental work and laboratory reports
- Poster presentations
- Debates
- Dissertation

## **ENTRY REQUIREMENTS**

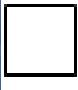

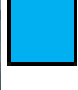

- UCAS Tariff points: 96
- All applicants must hold a minimum of four GCSE passes at grade C/4 or above to include English, Maths and Science.
- Please visit our website for a full list of entry requirements.



# COURSE MODULES

## BSc (Hons) Animal Management

Level 4		Level 5		Level 6	
Semester 1	Semester 2	Semester 3	Semester 4	Semester 5	Semester 6
Professional Skills for the Animal Industry		Research Methods		Dissertation OR Capstone Project	
		Business Skills			
Animal Biology		Behaviour	Principles of Nutrition	Applied Nutrition and Feeding	Applied Behaviour and Animal Welfare
Ethics of Animal Use	Animals in Society	Reproduction and Breeding	Animal Health and Welfare	Applied Health Management	Strategies and Issues in Animal Breeding
		Module Option *see below	Module Option *see below	Module Option **see below	Module Option **see below
Animal Husbandry		Livestock Production Systems		Precision Livestock Technology	Developments in Livestock Production
Ecology and Evolution		Management of Zoo Animal Collections		Applied Issues in Wildlife Conservation	Developments in Zoo Management
		Professional Practice and Legislation	Applied Behaviour and Training	Clinical Animal Behaviour	Developing Clinical Practice

-  BSc (Hons) Animal Management: UCAS Code D301
-  BSc (Hons) Animal Management (Livestock Technology): UCAS Code D307
-  BSc (Hons) Animal Management (Zoo and Wildlife conservation) UCAS Code D305
-  BSc (Hons) Animal Management (Pet Behaviour and Welfare) UCAS Code D304

\*Year 2: Business Concepts and Development, Professional Practice and Legislation, Applied Behaviour and Training

\*\*Year 3: Applied Issues in Wildlife Conservation, Developments in Zoo Management, Complementary Therapies, Consultancy Project.

For more information please visit our website





Diploma  
of HE

Animal  
Science

UCAS CODE:  
J2BQ

## ABOUT THE COURSE

This course is the first two years of the BSc (Hons) Animal Science course and allows students to graduate after two years with a qualification which allows them to work in a wide range of animal industries or to continue to a third year of study to obtain a BSc (Hons). This course offers a fresh approach to animal science, which is achieved by incorporating practical animal husbandry skills into a broad programme of academic study.

## ASSESSMENT METHODS

This programme provides a mix of assessment methods including.

- Practical assessments with companion and zoo animals, farm livestock and horses
- Examinations
- Presentations
- Essays and technical reports
- Assessed seminars
- Experimental work and laboratory reports
- Poster presentations

## ENTRY REQUIREMENTS

- UCAS Tariff points: 80
- Please visit our website for a full list of entry requirements.



# COURSE MODULES

Diploma  
of HE

Animal  
Science

Level 4		Level 5	
Semester 1	Semester 2	Semester 3	Semester 4
Professional Skills for the Animal Industry		Research Methods	
		Business Skills	
Animal Biology		Behaviour	Nutritional Biochemistry
Ethics of Animal Use	Introduction to Biochemistry	Animal Health Science	Reproduction and Development
		Module Option *see below	Module Option *see below
Animal Husbandry		Livestock Production Science	
Ecology and Evolution		Management of Zoo Animal Collections	
		Professional Practice and Legislation	Applied Behaviour and Training

- BSc (Hons) Animal Management: UCAS Code D301
- BSc (Hons) Animal Management (Livestock Technology): UCAS Code D307
- BSc (Hons) Animal Management (Zoo and Wildlife conservation) UCAS Code D305
- BSc (Hons) Animal Management (Pet Behaviour and Welfare) UCAS Code D304

\*Year 2: Business Concepts and Development, Professional Practice and Legislation, Applied Behaviour and Training

For more information please visit our website





UCAS CODE:  
D392

## ABOUT THE COURSE

This course is the first two years of the BSc Animal Management course and allows students to graduate after two years with a qualification which allows them to work in a wide range of animal industries or to continue to a third year of study to obtain a BSc. The course takes a holistic approach to animal management and is aimed at providing students with this broad knowledge.

## ASSESSMENT METHODS

This course provides a mix of assessment methods including.

- Practical assessments with companion and zoo animals, farm livestock and horses
- Examinations - both multiple choice and essay questions
- Presentations - both individually and in small groups
- Essays and technical reports
- Assessed seminars
- Experimental work and laboratory reports
- Poster presentations

## ENTRY REQUIREMENTS

- UCAS Tariff points: 80
- Please visit our website for a full list of entry requirements.



# COURSE MODULES

Level 4		Level 5	
Semester 1	Semester 2	Semester 3	Semester 4
Professional Skills for the Animal Industry		Research Methods	
		Business Skills	
Animal Biology		Behaviour	Principles of Nutrition
Ethics of Animal Use	Animals in Society	Reproduction and Breeding	Animal Health and Welfare
		Module Option *see below	Module Option *see below
Animal Husbandry		Livestock Production Systems	
Ecology and Evolution		Management of Zoo Animal Collections	
		Professional Practice and Legislation	Applied Behaviour and Training

- BSc (Hons) Animal Management: UCAS Code D301
- BSc (Hons) Animal Management (Livestock Technology): UCAS Code D307
- BSc (Hons) Animal Management (Zoo and Wildlife conservation) UCAS Code D305
- BSc (Hons) Animal Management (Pet Behaviour and Welfare) UCAS Code D304

\*Year 2: Business Concepts and Development, Professional Practice and Legislation, Applied Behaviour and Training  
 For more information please visit our website





Certificate  
of HE

Animal  
Studies

UCAS CODE:  
D303

## ABOUT THE COURSE

This course offers a vocational approach to the study of animals at Higher Education level. Achieved by incorporating practical animal husbandry skills into a broad programme of academic study, students will develop a sound understanding of scientific principles whilst also developing practical competence with a wide range of species.

## ASSESSMENT METHODS

This course provides a mix of assessment methods including.

- Practical assessments
- Examinations
- Presentations
- Essays and technical reports
- Assessed seminars
- Experimental work and laboratory reports

## ENTRY REQUIREMENTS

- UCAS Tariff points: 48
- Please visit our website for a full list of entry requirements.



# COURSE MODULES

Certificate  
of HE

Animal  
Studies

Level 4	
Semester 1	Semester 2
Professional Skills for the Animal Industry	
Animal Biology	
Ethics of Animal Use	Introduction to Biochemistry
	Animals in Society
Animal Husbandry	
Ecology and Evolution	

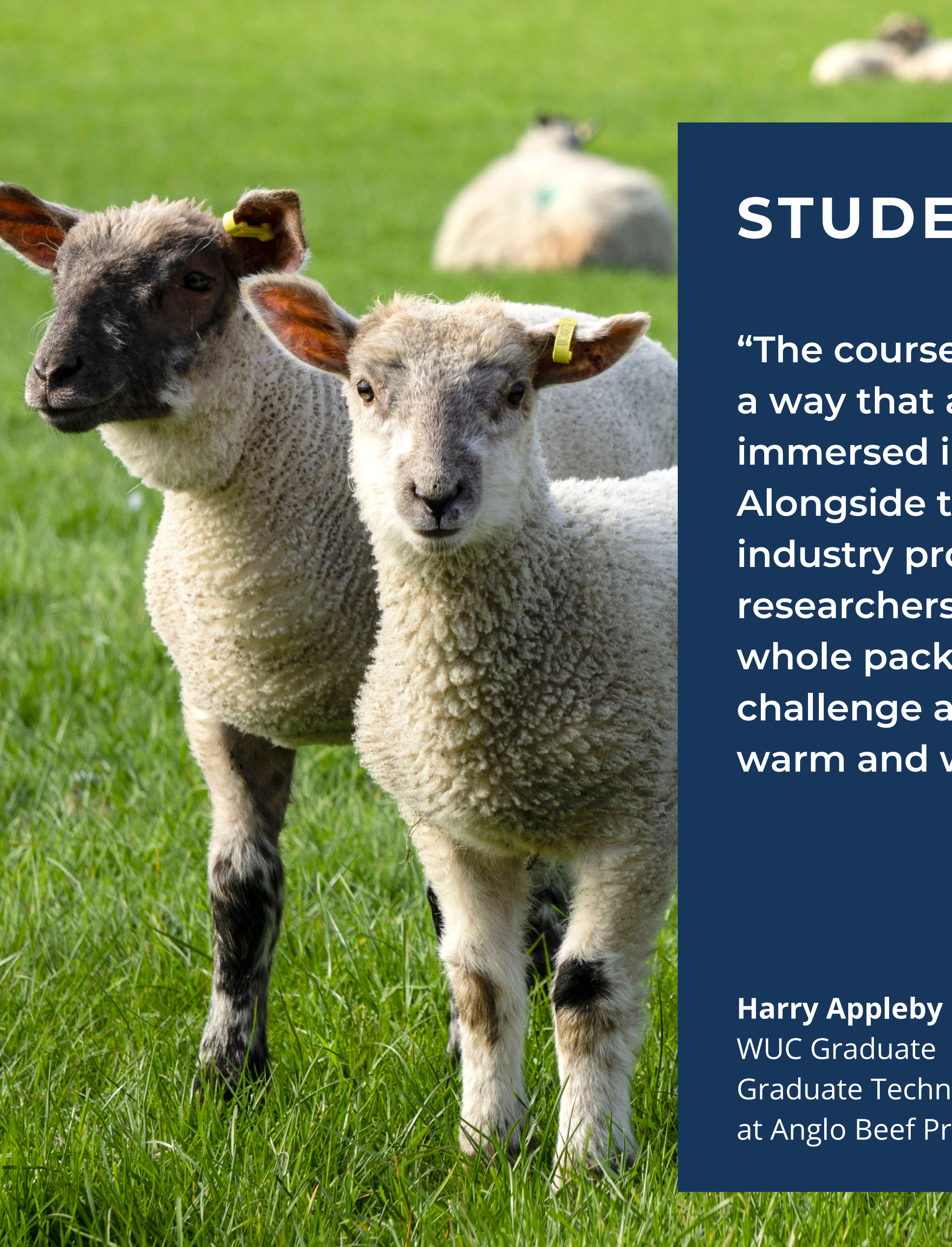




## POTENTIAL CAREER PROSPECTS:

- Animal Nutritionist
- Zoo Keeper / Education Officer
- Clinical Animal Behaviourist
- Dog Trainer
- Farm Coordinator/Manager
- Livestock industry Specialist
- RSPCA Officer
- Animal Conservationist
- Animal Unit Manager
- Animal Welfare Officer
- Charity Advisor
- Lecturer/Teacher
- Postgraduate Qualification or Research
- Research Technician in Biological Sciences
- Scientific Journalist
- Animal Charity Manager
- Government Advisor
- Business Owner





## STUDENT PROFILE

“The courses at Writtle are structured in a way that allows you to be completely immersed in the subject you love. Alongside this, you are taught by industry professionals, well-established researchers, and veterinarians. The whole package is there, and I would challenge anyone to find a campus as warm and welcoming as Writtle”.

**Harry Appleby**  
WUC Graduate  
Graduate Technical Manager  
at Anglo Beef Processors UK



## SPECIALIST OPTION: LIVESTOCK TECHNOLOGY

If you are interested in animal production and farm animal welfare and are looking for a degree course discussing how we can meet the food demands of society whilst maintaining the health and welfare of the animals in our care then this is your option. This option supports the whole animal teaching, such as the breeding and biosecurity topics on the Animal Management course or genetics and biotechnology on the Animal Science course. This option is for those looking for careers in farm livestock production including farm nutritionist, farm animal health and welfare advisory roles, and precision livestock farming.

---





## STUDENT PROFILE

"WUC has helped me progress onto my postgraduate course by providing me with the knowledge and skills I needed to understand complex topics and formulate solutions. I developed so many different skills in a range of subjects. This has helped me in life after the course, not only on my MSc but in everyday activities, also giving me an advantage when completing my course. The skills I learned during my course at Writtle has provided me with the opportunity to demonstrate unique qualities throughout my MSc - I wouldn't have gained from studying elsewhere."

**Jamaal Grant**

WUC Graduate

Progressed on to studying

MSc Endangered Species Recovery and Conservation



## SPECIALIST OPTION: ZOO AND WILDLIFE

If you are passionate about zoo animals and wildlife and are looking for a degree course to learn about the zoo industry and both UK and international wildlife management then this is the option for you.

Complemented by the animal husbandry focus of the Animal Management programme or the bioscience teaching of conservation genetics and animal health in the Animal Science programme, this course particularly prepares students for employment in the range of zoo and wildlife roles including graduate zoo keeper roles, zoo nutrition, and zoo and wildlife education.





## STUDENT PROFILE

“Completing the Animal Science degree at Writtle has provided me with a firm background in animal biology, health and welfare due to the programme's broad but thorough teaching style. I made great connections with Writtle's friendly staff and made the most of brilliant opportunities for additional work experience”.

**Sophia Pereira**  
WUC Graduate  
Accelerated Graduate  
Veterinary student at  
the Royal Veterinary College



## SPECIALIST OPTION: PET BEHAVIOUR & WELFARE

If you are passionate about companion animals and looking for a degree course to learn about their behaviour and welfare then this is the option for you. Complementing the holistic approach of the Animal Management programme or the core scientific principles of the Animal Science programme, this course particularly prepares students for employment in the range of companion animal roles including pet behaviour counsellors, pet nutritionists and pet animal welfare charities.

Our Pet Behaviour and Welfare pathways are Animal Behaviour and Training Council (ABTC) recognised programmes. This means they have been verified as meeting the required academic standards and cover the knowledge and understanding essential for various ABTC roles including Animal Training Instructor and Clinical Animal Behaviourist.





# NATIONAL STUDENT SURVEY



92%

Overall Student Satisfaction

Highest University-Sector Institution in England\*

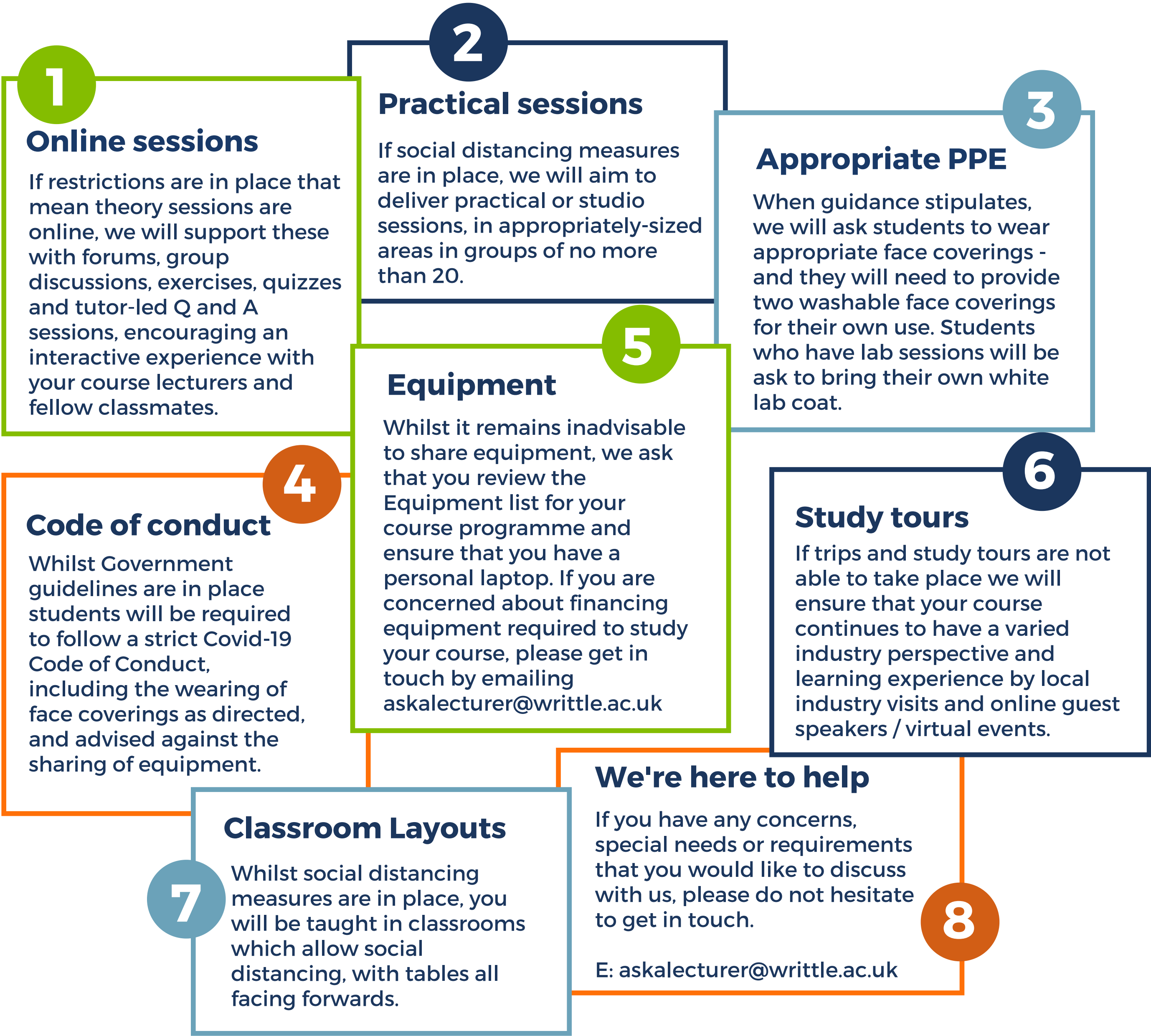
\*Based on 2020 NSS Taught data





# YOUR SAFETY AT WUC

In this ever changing situation, we will always follow Government guidance and be working towards the following principles to effectively deliver our programmes and to ensure safety of all our students and staff at Writtle University College.







Writtle  
University  
College

We hope this guide has given you all the information you need, but please do not hesitate to contact our admissions team if you have any questions about applying to study here, want an update on the status of your application, or have a query about what you need to do next.

Please keep an eye on our website for details on our upcoming events

T: 01245 424200  
E [enquire@writtle.ac.uk](mailto:enquire@writtle.ac.uk)

Want to ask a question about student life?  
Contact a current student at  
[askastudent@writtle.ac.uk](mailto:askastudent@writtle.ac.uk)

[writtle.ac.uk/UG-Animal-Management](http://writtle.ac.uk/UG-Animal-Management)  
[writtle.ac.uk/UG-Animal-Science](http://writtle.ac.uk/UG-Animal-Science)