



Writtle  
University  
College

# Welcome to WUC



[www.writtle.ac.uk](http://www.writtle.ac.uk)



# Who are we?

- Specialist College & University
- Located in **Chelmsford, Essex**
- Set within **550 acres** of stunning countryside but with close links to towns and cities
- Industry leader for **'Land-based'** careers
- Ofsted rated **'Good'** (March 2018)



# About WUC

- Around 1000 College Course learners and apprentices
- Study full-time, part-time or an Apprenticeship
- Offer **level 2 and 3 certificates/diplomas**
- Practical, hands-on style of learning
- Specialist facilities include Animal Centre, Equine campus, Farm, Design & Floristry workshops, Sport Recreation Centre , glasshouses and much more!





# What's the difference between sixth form and an FE college?

Both college and sixth form offer different experiences. A college will offer you a different learning environment to that experienced at a school's sixth form. Here are just some of the differences:

**Environment:** A college will offer you a different learning environment to that experienced at a school's sixth form, there are likely to be students from a wide range of ages, backgrounds and interests. College also gives you the chance to meet new people and start a fresh.

**Timetables:** One of the first differences between school and college you will notice is your timetable! At college it's also possible to study on a part-time basis, rather than take a full-time course

**Types of courses:** Colleges like ourselves offer diplomas and vocational courses. Level 3 Diplomas are equally respected by universities if you so choose to go, whilst being taught with a more hands-on approach. This can also be very useful to those who don't intend on going to university as you will acquire the skills to directly enter into a career.



# Entry Requirements

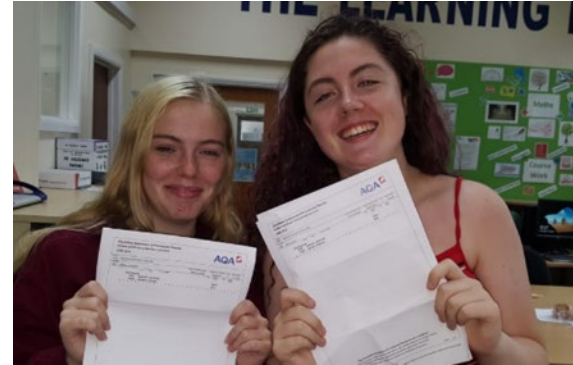
## LEVEL 3

- 5x GCSE's
- Grades 9 – 4
- Including Maths  
AND English

## LEVEL 2

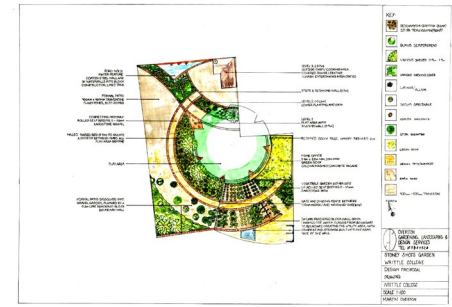
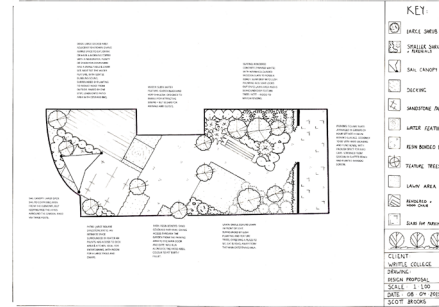
- 4x GCSE's
- Grades 9 – 3
- Including Maths  
OR English

If you don't have a GCSE grade 4 or above in Maths and/or English, you will study these qualifications alongside your course and will be given full support



# Skills and Training

Garden Design



Landscape Construction



Real Projects or Shows





# Skills and Training



Industry links, skills and resources.

# Study progression

On the completion of a level 2 horticulture programme learners can continue in education at level 3 on our full time programme.

Level 3 progressions provide opportunity for higher education degree in Horticulture or Landscape Garden Design/ Architecture.



# Career Progression

On the completion of a level 2 horticulture programme learners can enter industry as a horticulturalist, landscaper or nursery technician.

These can include Historic gardens, commercial and/or domestic Estates maintenance, Nursery production, commercial and/or domestic Landscaping as well as sports turf and local authorities.

Level 3 progressions provide opportunity for managerial roles such as assistant head gardener, self employment, CAD technician, landscape supervisor, horticultural marketing, Royal Horticultural Society (show assistants, garden supervisor and other roles), Botanic gardens....



Writtle  
University  
College

# Thank you for listening!

## Any questions?

# #ONLYATWRITTLE

Follow us on social media and post your photos  
using our hashtag!



@writtleuniversitycollege



@writtleofficial



@writtleuniversitycollege

# # O N L Y A T W R I T T L E